



## 中土世界 RMB 488

出现在J.R.R托尔金小说著作中的一块架空世界中的大陆和世界，这名称来自于古英文中的“middangeard”，字面含义是“中间的土地”，意指“人类居住的陆地”。在中土大陆发生的故事，有霍比特人，魔戒，和精灵宝钻等等

澳洲安格斯T骨牛排300g，烤猪肋排150g，烤鲑鱼2根，芝士焗新西兰蟹虾2只，青口贝4只，烤玉米2段，烤鸡翅5个，黄油烤土豆和炒西兰花100g，洋葱圈，香烤大蒜1个  
Angus T-Bone Steak, Roast Pork Ribs, Roast Sausage, Baked New Zealand Scampi, New Zealand Mussels, Baked Sweet Corn, Roast Chicken Wings, Roast Baby Potato and Broccoli, Roast Garlic with Butter



CLOSE TO NATURE...

# MAIN COUSE

主 / 食

**HOT** 招牌中土世界 (3-4人) 488

Middle Earth (For 3-4 Persons)

澳洲安格斯T骨牛排300g, 烤猪肋排150g, 烤腊肠2根, 芝士焗新西兰蟹虾2只, 青口贝4只, 烤玉米2段, 烤鸡翅5个, 黄油烤土豆和炒西兰花100g, 洋葱圈, 香烤大蒜1个

Angus T-Bone Steak, Roast Pork Ribs, Roast Sausage, Baked NZ Scampi, NZ Mussels, Baked Sweet Corn, Roast Chicken Wings, Roast Baby Potato and Broccoli, Roast Garlic with Butter

**HOT** 澳洲安格斯小牛肉配大明虾 220g 188

Grilled Australian Angus Veal with King Prawn

澳洲安格斯肉眼牛排配烤土豆和红酒汁 300g 208

Grilled Australian Angus Rib-Eye with Roasted Potato and Red Wine Sauce

澳洲西冷牛排配烤土豆和红酒汁 220g 108

Grilled Australian Sirloin Steak with Roasted Potato and Red Wine Sauce

澳洲安格斯M5肉眼牛排配烤土豆和红酒汁 300g 428

Grilled Australian Angus Rib-Eye (M5) Roasted Potato with Red Wine Sauce

**HOT** 新西兰活翡翠贻贝配椰汁海鲜汤, 柠檬草和新西兰白酒汁 380g 158

NZ Fresh Mussels Coconut Seafood Soup, Lemon Grass with NZ White Wine Sauce

**HOT** 咖喱烩新西兰冻翡翠贝配咖喱汁 220g 78

NZ Frozen Mussels with Curry Sauce

**HOT** 火焰加拿大翡翠螺配海鲜汁 180g 78

Flame Canada Conch with Seafood Sauce

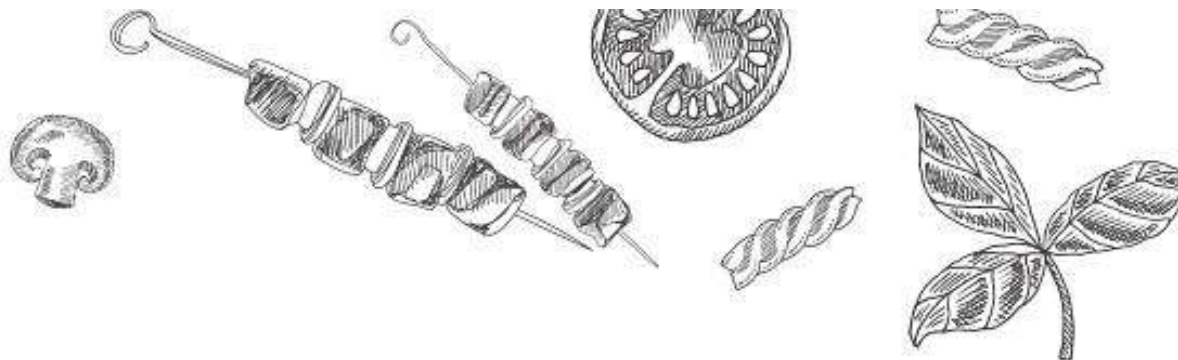


主厨  
推荐  
KIWIANA

新西兰麦卢卡蜂蜜  
BBQ猪肋排

份量十足，诚意满满  
在烤制的过程中不断涂刷秘制酱料  
用果木炭火慢烤，令味道层层渗入  
每咬一口都是满满的肉感

RMB 78 / 128  
(小份 / 大份)



**HOT** 安格斯带骨牛肉眼配黄油烤土豆，炒蔬菜（2人份） 900g 388

Angus Top Beef Rib Eye with Butter Roasted Potato, Fried Vegetable (For 2 Person)

黑木烤新西兰羊小排配土豆泥健康时蔬 180g 148

Roasted New Zealand Lamb Chop with Mashed Potato & Vegetables

**HOT** 香料烤春鸡配新西兰麦卢卡蜂蜜 200g 78

Seasoned Roasted Spring Chicken with NZ Manuka Honey

新西兰麦卢卡蜂蜜BBQ猪肋排配玉米（小份150g / 大份300g） 78 / 128

New Zealand Manuka Honey BBQ Pork Ribs with Sweet Corn

酥皮三文鱼卷配蘑菇汁（需预约） 200g 158

Puff Pastry Salmon Roll with Mushroom Sauce

惠灵顿牛柳，鹅肝配黑松露菌菇酱（需预约） 320g 328

Beef Wellington, Goose liver with Black Truffle Mushroom Sauce

英式炸鱼条配番茄沙司和塔塔汁 160g 78

Beer Battered Fish Fingers & Chips with Tomato Ketchup & Tartar Sauce

**HOT** 红烩牛舌配新西兰脆米饼 180g 98

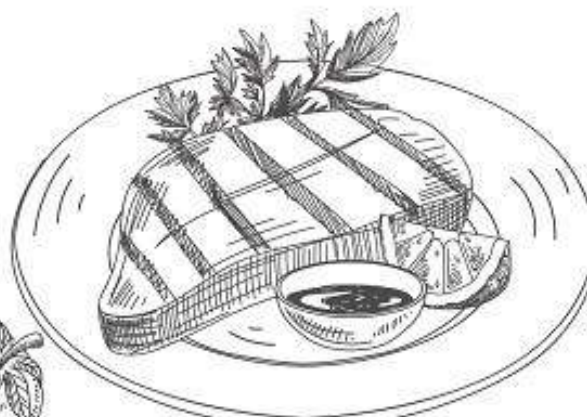
Stewed Beef Tongue with Fry Crisp Rice Cake

芝士焗小青龙配意式宽面，奶油蘑菇酱 320g 108

Baked Baby Lobster with Lasagne, Cream Mushroom Sauce

**HOT** 芝士焗新西兰海鲜（生蚝，鳌虾，翡翠贻贝） 350g 88

Baked New Zealand Seafood (Oysters, Scampi, Mussels)





### 新西兰 手工汉堡黑巨无霸

份量十足，诚意满满  
在烤制的过程中不断涂刷秘制酱料  
用果木炭火慢烤，令味道层层渗入  
每咬一口都是满满的肉感

RMB 108



CLOSE TO NATURE...

# HAMBURGER & PIZZA

## 汉堡 & 匹萨

- |            |  |     |
|------------|--|-----|
| <b>HOT</b> | 新西兰特色粉红皇后鹅肝牛肉汉堡 480g<br>New Zealand Pink Queen Goose Liver Beef Hamburger                            | 118 |
| <b>HOT</b> | 新西兰手工汉堡黑巨无霸 450g<br>Home-Made New Zealand Beef Hamburger   | 108 |
| <b>HOT</b> | 玛格丽特匹萨 260g<br>Fresh Mozzarella Cheese Pizza with Tomato Sauce                                       | 78  |
|            | 香烤菌菇芝士匹萨配以芝麻菜叶 260g<br>Grilled Mushroom Cheese Pizza with Arugula                                    | 78  |
|            | 海鲜匹萨配以虾仁, 培根, 银鱼柳 260g<br>Seafood Pizza with Shrimp, Bacon, Anchovy                                  | 88  |
| <b>HOT</b> | 意大利辣肠匹萨配以洋葱, 菌菇, 自制番茄酱 260g<br>Italian Pepperoni Pizza with Onions, Mushrooms, Homemade Tomato Sauce | 78  |
| <b>HOT</b> | 榴莲匹萨 (马来西亚D24冷冻榴莲肉) 260g<br>Durian Pizza (Malaysia D24 Frozen Durian)                                | 78  |
|            | 马可波罗火腿鸡肉匹萨 260g<br>Marco Polo Ham and Chicken Pizza  | 78  |

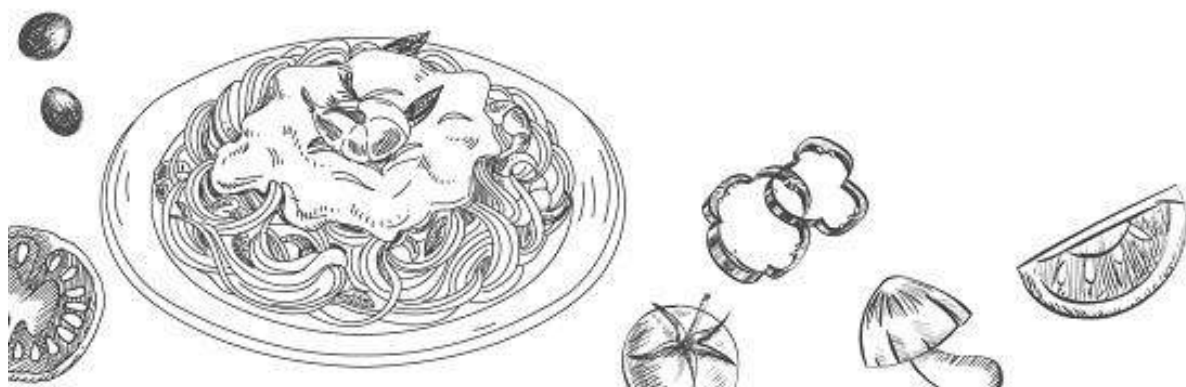


CLOSE TO NATURE...

# PASTA & RISOTTO

## 意面 & 烩饭

- |            |   |    |
|------------|---|----|
| <b>HOT</b> | 新西兰海鲜面配新西兰红螯虾 220g<br>New Zealand Seafood Pasta with New Zealand Scampi | 68 |
|            | 奶油培根意面 220g<br>Pasta Carbonara  | 58 |
| <b>HOT</b> | 传统意式肉酱面 220g<br>Classic Spaghetti Bolognese                             | 58 |
|            | 辣味芦笋虾仁意大利面 220g<br>Spicy Pasta with Asparagus & Shrimp                  | 58 |
|            | 新西兰黑金鲍烩饭 320g<br>Risotto with New Zealand Black Abalone                 | 98 |





CLOSE TO NATURE...

# DESSERT

## 甜 / 点

**海盐芝士** 200g 58

海盐芝士蛋糕配香缇奶油，酥脆饼干  
Sea Salt Cheese Cake and Chantilly Cream

**怀唐伊之旅** 160g 52

伯爵香缇慕斯配香橙奶油和血橙果冻  
Earl Grey Chantilly with Orange Cream and Grapefruit Madeleine

怀唐伊：在新西兰人心目中占有极其重要的位置，是对新西兰历史和文感兴趣的游客“必到”之处。  
It is really important place for Kiwis and a must view for tourists interested in New Zealand history and culture.

**HOT 伊甸山** 180g 46

草莓巧克力冰淇淋和新西兰蛋白霜  
Flame Ice Cream Cake

伊甸山：位于市中心以南约5公里处，是一死火山的火山口。山顶设有瞭望台，视野开阔，是眺望市景的好地方。此外，还可参观到12世纪时毛利人要塞的遗迹。  
Mount Eden: Located about 5 kilometers south of the city center, it is the crater of an extinct volcano. There is an observatory on the top of the mountain and a wide view. It is a good place to look out over the city. In addition, you can visit the remains of the Maori fortress in the 12th century.

**HOT 微观袋底洞** 280g 58

新西兰风味提拉米苏  
New Zealand Style Tiramisu

袋底洞 Bag End，指皇王中比尔博·巴金斯在哈比屯的住所。比尔博离开故乡之后，该地成为佛罗多·巴金斯的财产。  
Bag End, referring to King Bilbo Baggins's residence at Habitu, after Bilbo left his hometown, it became the property of Frodo Baggins.



**熔岩巧克力** 185g 68

熔岩巧克力蛋糕配椰子雪葩

Lava Chocolate Cake with Coconut Sobert

**HOT** **初露** 200g 68

新西兰榛子杏仁拿破仑配巧克力冰淇淋

New Zealand Hazelnut Napoleon with Chocolate Ice Cream

银蕨：新生出的嫩蕾呈弯曲状，新西兰毛利人称之为初露（Koru），

是新西兰的国花，银蕨因此也就成为一种国家标志。

这种蕨类多为野生，可见于新西兰境内的雨林地区。

Silver fern: The tender buds of newborns are curved. New Zealand Maori people call it Koru.

It is New Zealand's national flower. Silver ferns therefore become a national symbol.

Most of these ferns are wild and can be found in rain forests in New Zealand.

**奇异小笼** 220g 36

冰淇淋小笼包

Ice Cream Buns

**HOT** **奇异安娜特色华夫** 255g 48

华夫饼配自选冰淇淋（香草、草莓、巧克力、榴莲）

Waffle & Ice Cream (Vanilla, Strawberry, Chocolate, Durian)

**HOT** **热带雨林（下午茶）** 108

巧·尼西亞 / Chocolate Mini Popsicle.

櫻·斯里兰卡 / Lavash & Tuna Avocado

玫·利比里亚 / Rose Macaron

青·孟加拉 / Green Apple Mousse

燒·巴沙 / Bacon Mini Burger

芝·加蓬 / Cheese Cake

栗·刚果 / Chestnuts Mont Blanc

芒·尼斯 / Mango Cheese Mousse

藍·苏丹 / Blue Berry Tart

啡·文萊 / Coffee Madeleine

